

» expand your vision



MVP11x
MPEG-2 HD Player (19")

**YOUR PARTNER
FOR PROFESSIONAL
HD SOLUTIONS**

There is no doubt that high resolution digital images provide a significant step forward to superior video shows needed in the advertisement and presentation market. Addressing various application scenarios the MVP111 is an universal single-channel 'workhorse', which easily could be configured for complex multi-channel solutions.

Beside standalone playback, synchronisation-over-IP allows to combine multiple MVP11x for frame-accurate playback in 3D, split-screen and video-wall application using standard 100BaseT network. For performing 3D/48Hz on a single projector one MVP112 could playback in a pixel-accurate mode (± 16 Pixel).

A sophisticated GUI allows to configure and to control MVP11x over IP-network, including grouping of multiple player into a cluster and controlling playback of clusters.

Featuring automated playback using XML playlist format including show control mechanisms the MVP11x combines flexibility with reliability, approved by various customers.

	MVP111	MVP112/3/4
HD channels / Form factor	1 / 1RU	2/3/4 / 4RU
Removable HDD	1 slot	3 slots
Linux / Win XP	● / opt.	● / opt.
Frame / Pixel Sync option	● / -	● / ●



KEY FEATURES

Compact, standalone, remote-controllable multi-channel MPEG-2 HD Player

SD/HD playback, TS/PS file format, Broadcast/D-Cinema bitrates

Intuitive GUI to configure/control all player functions over IP (MM_Player)

Bootling from flash memory

XML-playlist supporting show control, scheduled full-automated playback

Configuration, control and synchronisation over IP network

Unsynchronized, frame-accurate and pixel-accurate playback modes

Front panel display control

APPLICATIONS

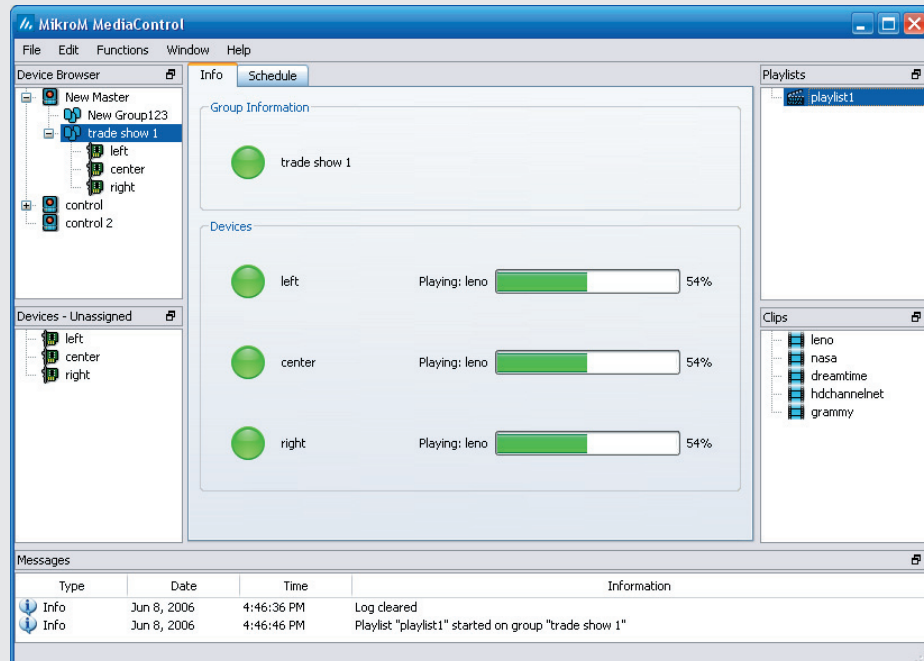
Trade show, Exhibition, Museum, Theme park, Special venue

Split-screen, Video wall

3D on single display / multiple displays

48..96Hz on single display

POS/POI application



Player Application

TECHNICAL SPECIFICATION

AUDIO, VIDEO AND FILE FORMATS

MPEG-2 MP@HL (ISO/IEC 13818) TS, PS
1080/30p, 1080/60i, 1080/25p, 1080/50i,
1080/24p, 1080/24sf, 720/60p, 720/50p,
576/50p, 576/50i, 480/60p, 480/60i

1/1.001 frame rates supported

Video Up/Down-Scaling

Reverse 3:2 Pulldown

MPEG-1 Layer II, SMPTE302M, Dolby E
(AC-3, AAC, DTS optional)

HARDWARE

Intel Celeron M 1.6 GHz

Min. 256 MB memory

320 GB HDD

(8 h @ 80 Mbps or 32 h @ 20 Mbps)

1 VGA, 1 1000BaseT, 4 USB2.0,

1 RS232, 1 Front-USB, 1 Front-FireWire

SOFTWARE

OS Linux Kernel 2.6

(Win XP on request)

Linux/Windows GUI for remote control
and configuration (Mac on request)

Hierarchical player management

Playback control (Play, Stop, Pause, ...)
of single player or clustered players

XML-playlists and scheduler
supporting show control

Player setup and device configuration

Player SDK for system integration

OPTIONS

SD/HD-SDI video output

Synchronization over IP network (Software)

Cable/Satellite receiver card (also with CI)

ASI Transceiver card

WLAN, Fibre-Channel

HD-DVD (as available)

AUDIO/VIDEO OUTPUTS (DVI)

Analog/Digital Video Output: DVI-I

Analog Audio Output: Stereo line out, 2 RCA

Digital Audio Output: Optical TOSLink,
Bitstream/Stereo

AUDIO/VIDEO OUTPUTS (SDI)

Digital Video Output: SD/HD-SDI

Digital Audio Output:

Optical TOSLink, Bitstream +
8ch AES/EBU digital, SMPTE302M

PHYSICAL AND POWER

Dimensions: 19" x 1RU/4RU

Power: 100-240 VAC, 50-60 Hz, 300 W

OPERATING CONDITIONS

Temperature: 0°C to 45°C (32°F to 113°F)

Rel. Humidity: 5 to 90% (non-cond.)

Cooling: Forced airflow cooling

COMPLIANCE

CE, FCC, UL, CUL, BSMI, CB, NEMKO, TUV, CCC

MikroM Mikroelektronik für
Multimedia GmbH

Dovestraße 1
10587 Berlin
Germany

Tel: +49 30 398839 0
Fax: +49 30 398839 29

www.mikrom.com
info@mikrom.com

MikroM maintains a policy of product
improvement and reserves the right to
modify the specifications without prior
notice.

©2005 MikroM GmbH. All rights reserved.
All other trademarks are the property of
their respective owners.