

»» double the fun

## MVP101

Compact MPEG-2 HD Player

The MVP101 is a compact Dual Channel HD Player featuring Pixel-accurate synchronization, excelling him to be one of the smallest 3D server systems.

With compact form factor and reduced noise emission the MVP101 is optimized for presentation displays.

Having one or two channels with HD-SDI or DVI output available, the MVP101 is very easy to customize and to upgrade, fulfilling the need of several different applications in all kinds of places.

Footage can be conveniently uploaded to the MVP101 using the two independent USB2.0/S-ATA-connectable removable hard drives.

Taking advantage of the direct accessibility of the main functions through the front panel display, the MVP101 is set up in minutes.

Just press play and enjoy the world of 3D!



MVP101

## TURNING TECHNOLOGY INTO PRODUCTS

### KEY FEATURES

Compact, standalone, remote-controllable dual channel MPEG-2 HD Player

SD/HD playback, TS/PS file format, Broadcast/D-Cinema bitrates

Intuitive GUI to configure/control all player functions over IP (MediaControl)

Booting from flash memory

XML-playlist supporting show control, scheduled full-automated playback

Configuration, control and synchronisation over IP network

Unsynchronized, frame-accurate and pixel-accurate playback modes

Front panel display control

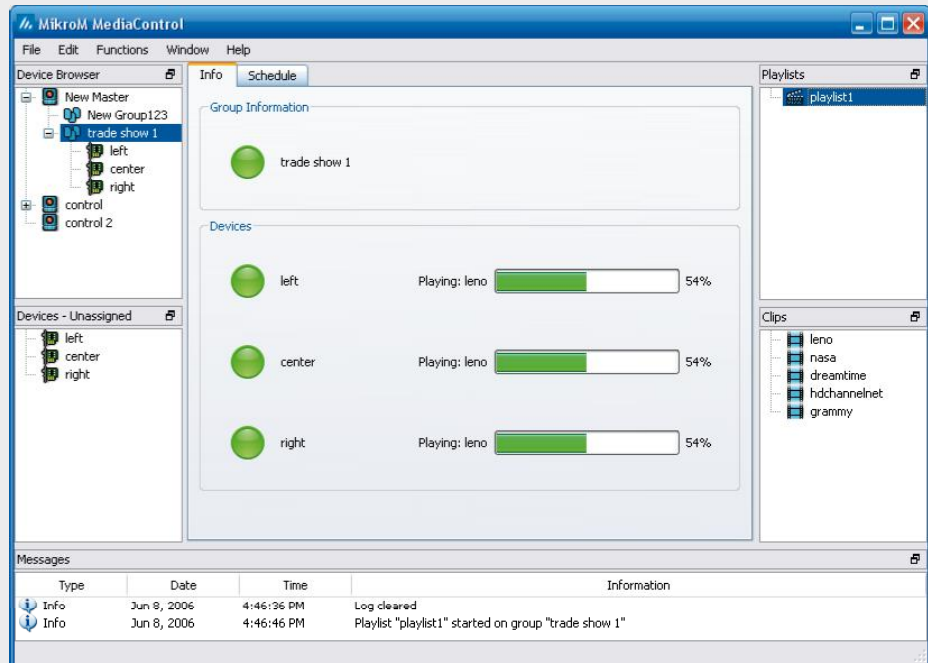
### APPLICATIONS

Trade show, Exhibition, Museum, Theme park, Special venue

Split-screen, Video wall

3D on single display

POS/POI application



Player Application

## TECHNICAL SPECIFICATION

### AUDIO, VIDEO AND FILE FORMATS

MPEG-2 MP@HL (ISO/IEC 13818) TS, PS  
 1080/30p, 1080/60i, 1080/25p, 1080/50i,  
 1080/24p, 1080/24sf, 720/60p, 720/50p,  
 576/50p, 576/50i, 480/60p, 480/60i

1/1.001 frame rates supported

Video Up/Down-Scaling

Reverse 3:2 Pulldown

MPEG-1 Layer II, SMPTE302M, Dolby E  
 (AC-3, AAC, DTS optional)

### HARDWARE

Intel Celeron M 1.6 GHz

Min. 256 MB memory

2x160 GB HDD (removable)  
 (8 h @ 80 Mbps or 32 h @ 20 Mbps)

1 VGA, 1 1000BaseT, 4 USB2.0,  
 1 RS232, 1 Front-USB, 1 Front-FireWire

### SOFTWARE

OS Linux Kernel 2.6  
 (Win XP on request)

Linux/Windows GUI for remote control  
 and configuration (Mac on request)

Hierarchical player management

Playback control (Play, Stop, Pause, ... )  
 of single player or clustered players

XML-playlists and scheduler  
 supporting show control

Player setup and device configuration

Player SDK for system integration

### OPTIONS

SD/HD-SDI video output

Synchronization over IP network (Software)

Cable/Satellite receiver card (also with CI)

ASI Transceiver card

WLAN, Fibre-Channel

### AUDIO/VIDEO OUTPUTS (DVI)

Analog/Digital Video Output: DVI-I

Analog Audio Output: Stereo line out, 2 RCA

Digital Audio Output: Optical TOSLink,  
 Bitstream/Stereo

### AUDIO/VIDEO OUTPUTS (SDI)

Digital Video Output: SD/HD-SDI

Digital Audio Output:  
 Optical TOSLink, Bitstream +  
 8ch AES/EBU digital, SMPTE302M

### PHYSICAL AND POWER

Dimensions: 11.5" x 4.2" x 13"

Power: 100-240 VAC, 50-60 Hz, 300 W

### OPERATING CONDITIONS

Temperature: 0°C to 45°C (32°F to 113°F)

Rel. Humidity: 5 to 90% (non-cond.)

Cooling: Forced airflow cooling

### COMPLIANCE

CE, FCC, UL, CUL, BSMI, CB, NEMKO, TUV, CCC

MikroM Mikroelektronik für  
 Multimedia GmbH

Dovestraße 1  
 10587 Berlin  
 Germany

Tel: +49 30 398839 0  
 Fax: +49 30 398839 29

www.mikrom.com  
 info@mikrom.com

MikroM maintains a policy of product  
 improvement and reserves the right to  
 modify the specifications without prior  
 notice.

©2007 MikroM GmbH. All rights reserved.  
 All other trademarks are the property of  
 their respective owners.